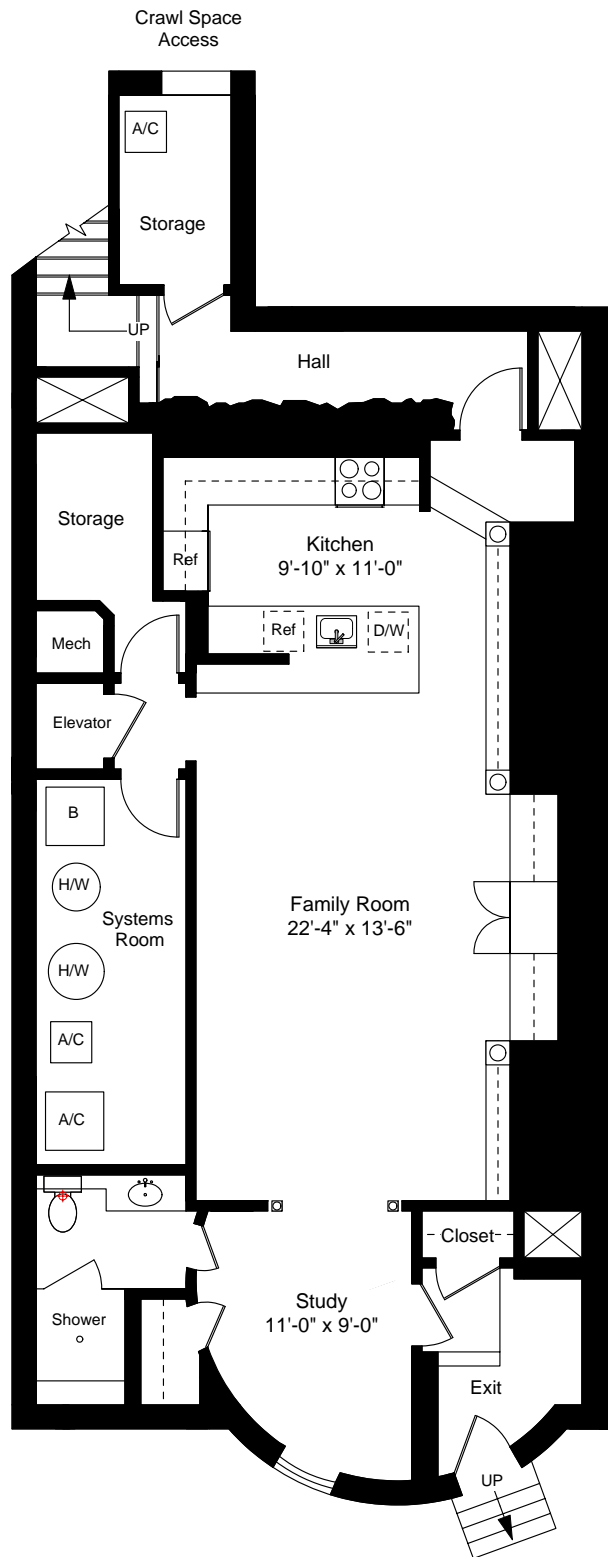


Lower Level Floor Plan
 Ceiling Height = 8'-1"

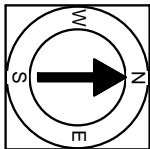


Scale 1/8" = 1'-0"

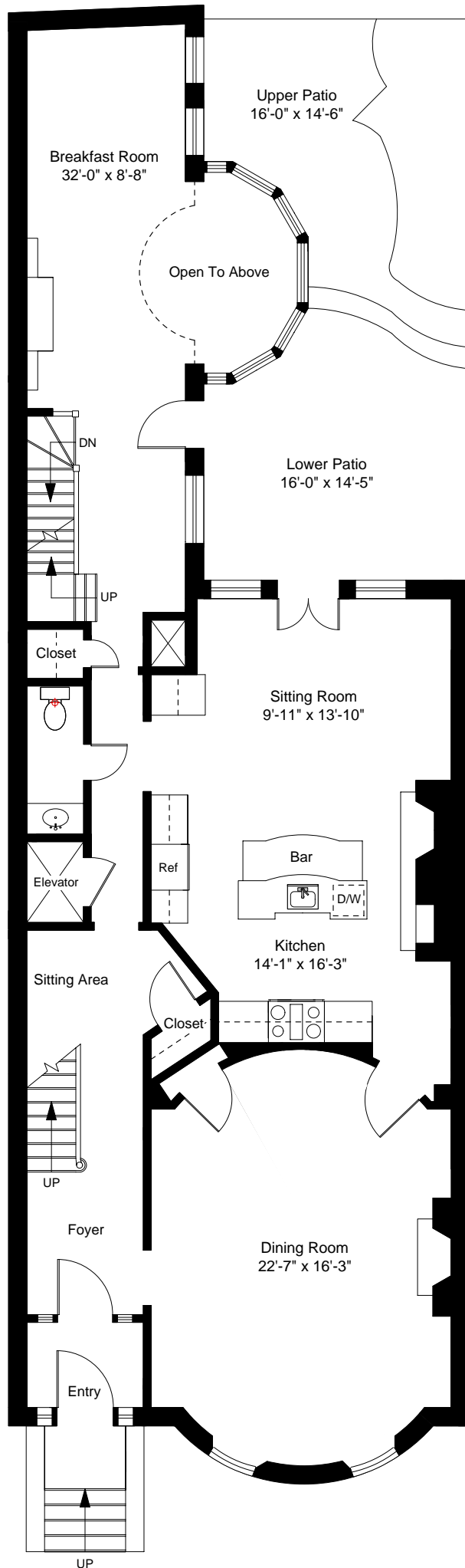
Louisburg Square
 Boston, MA 02108



1



Note: Dimensions are not guaranteed and are provided for informational purposes only.



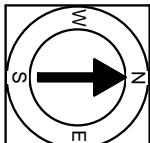
First Floor Plan
 Ceiling Height = 10'-0"



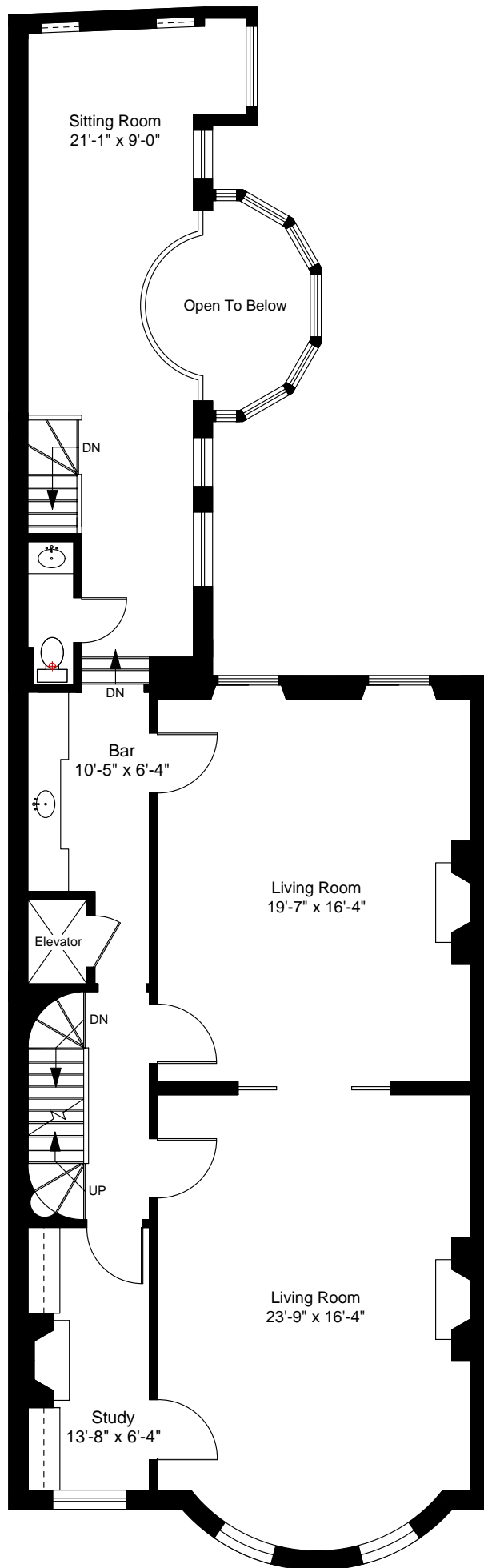
Scale 1/8" = 1'-0"

Louisburg Square
 Boston, MA 02108

2



Note: Dimensions are not guaranteed and are provided for informational purposes only.



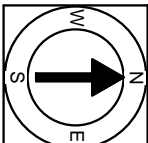
Second Floor Plan
 Ceiling Height = 11'-3"



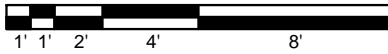
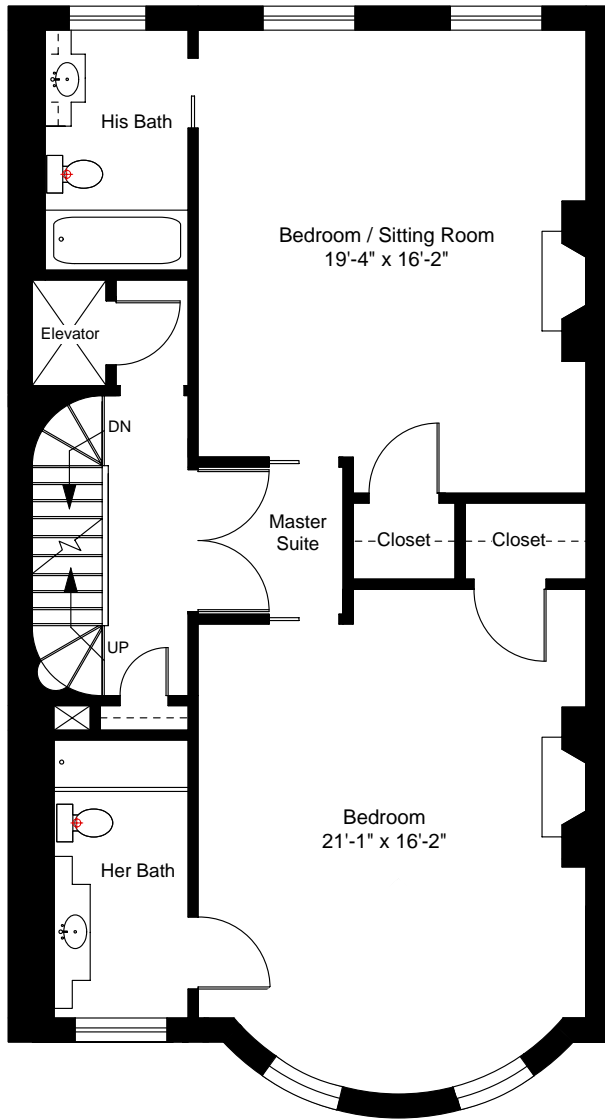
Scale 1/8" = 1'-0"

Louisburg Square
 Boston, MA 02108

3



Note: Dimensions are not guaranteed and are provided for informational purposes only.

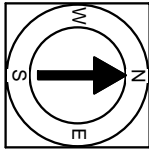


Scale 1/8" = 1'-0"

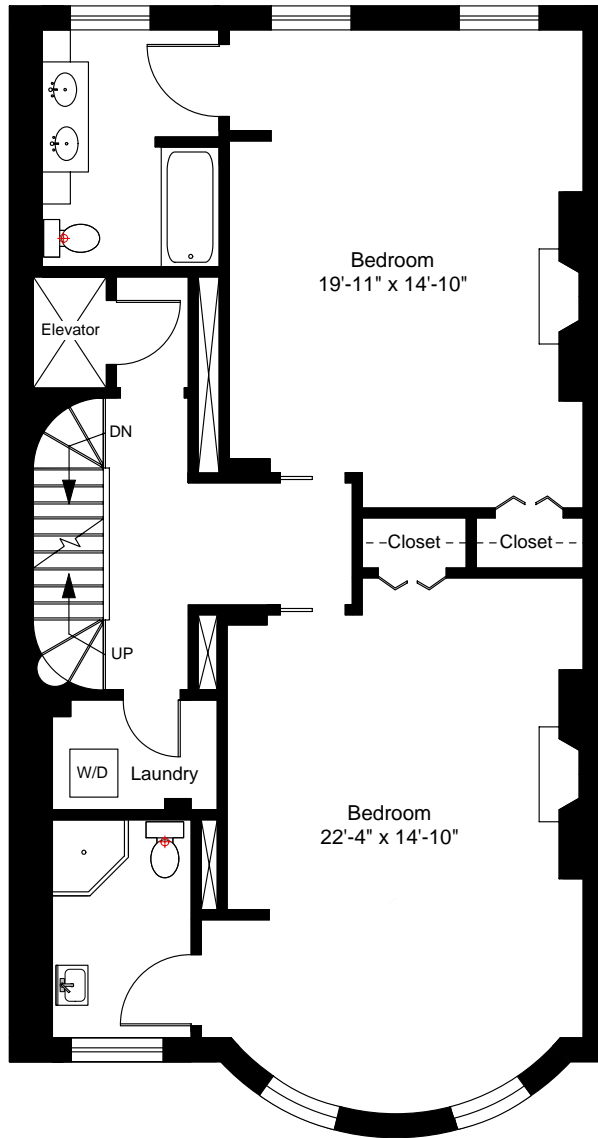
Third Floor Plan
Ceiling Height = 8'-10"

Louisburg Square
Boston, MA 02108

4



Note: Dimensions are not guaranteed and are provided for informational purposes only.

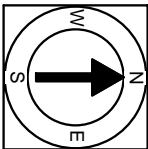


Scale 1/8" = 1'-0"

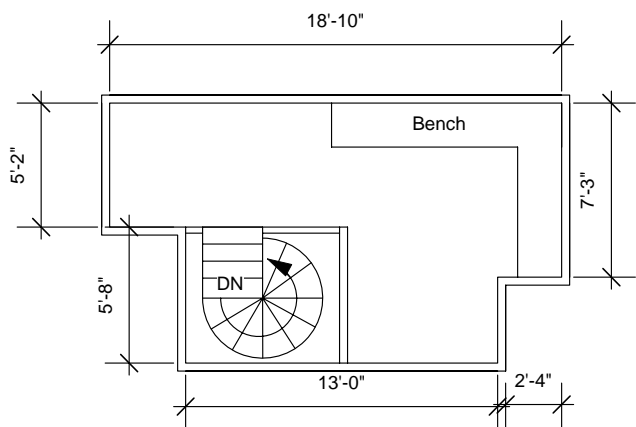
Fourth Floor Plan
Ceiling Height = 7'-11"

Louisburg Square
Boston, MA 02108

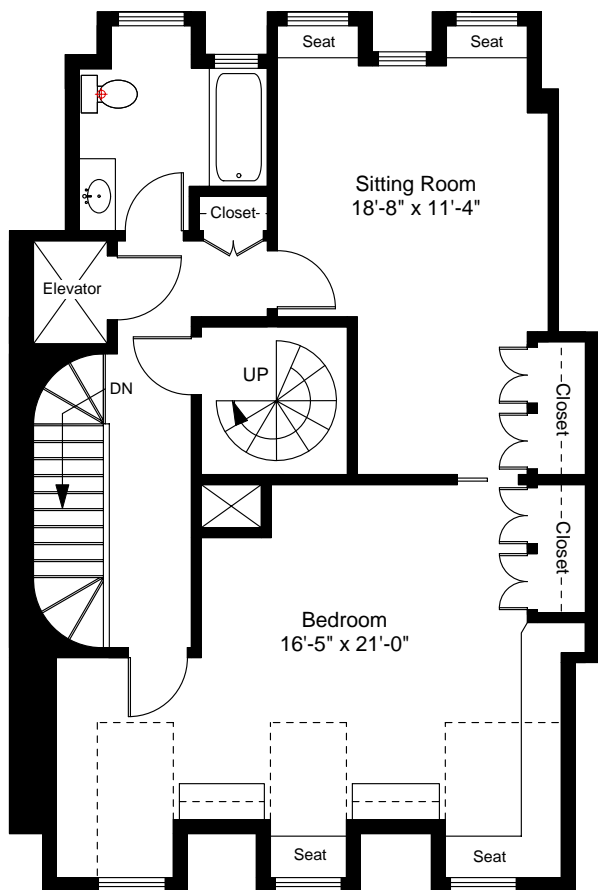
5



Note: Dimensions are not guaranteed and are provided for informational purposes only.



Roof Deck Floor Plan



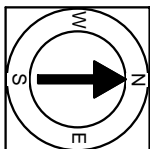
Fifth Floor Plan
Ceiling Height = 7'-6"



Scale 1/8" = 1'-0"

Louisburg Square
Boston, MA 02108

6



Note: Dimensions are not guaranteed and are provided for informational purposes only.

NEW ENGLAND
FLOOR PLANS
(617) 872-3336