

Scale 1/4" = 1'-0"

New England Floor Plans  
 Cumberland, Rhode Island  
 Telephone - 800-328-0217  
 www.nelfloorplans.com

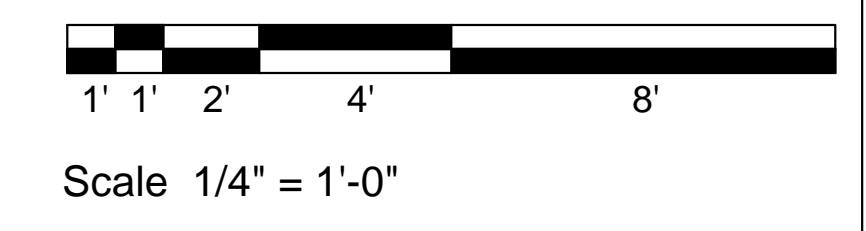
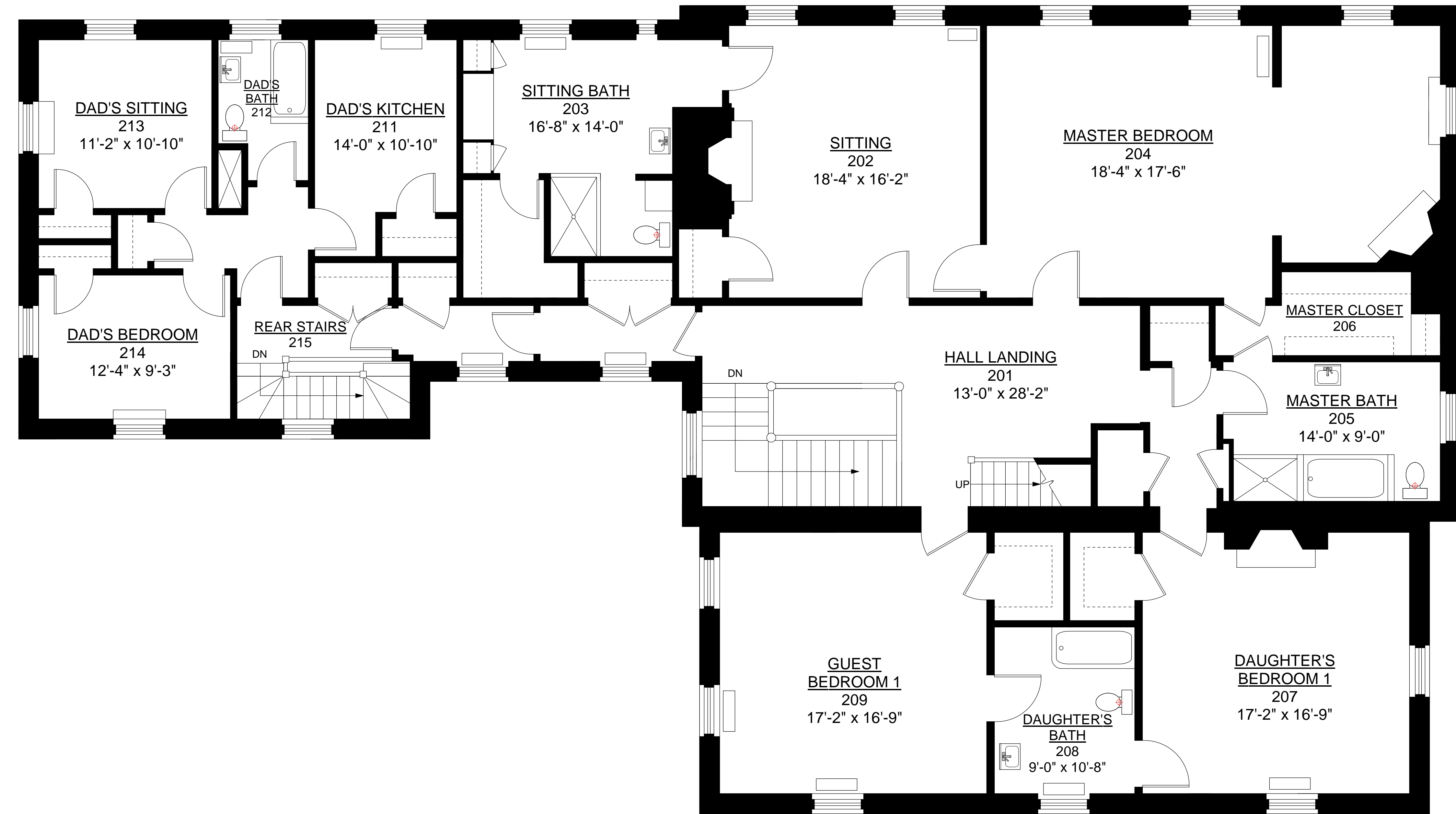
PROJECT:  
  
 66 Cooke Street  
 Providence, Rhode Island  
  
 As-Builts

NUMBER:	DRAW:
DATE: January 24, 2009	CHECK:
SCALE: 1/4" = 1'-0"	

DRAWING TITLE:  
 Existing Conditions  
 First Floor Plan  
 Ceiling Height - 10'-3"  
 Gross Floor Area =  
 3,620 SF

DRAWING NUMBER:

A-1

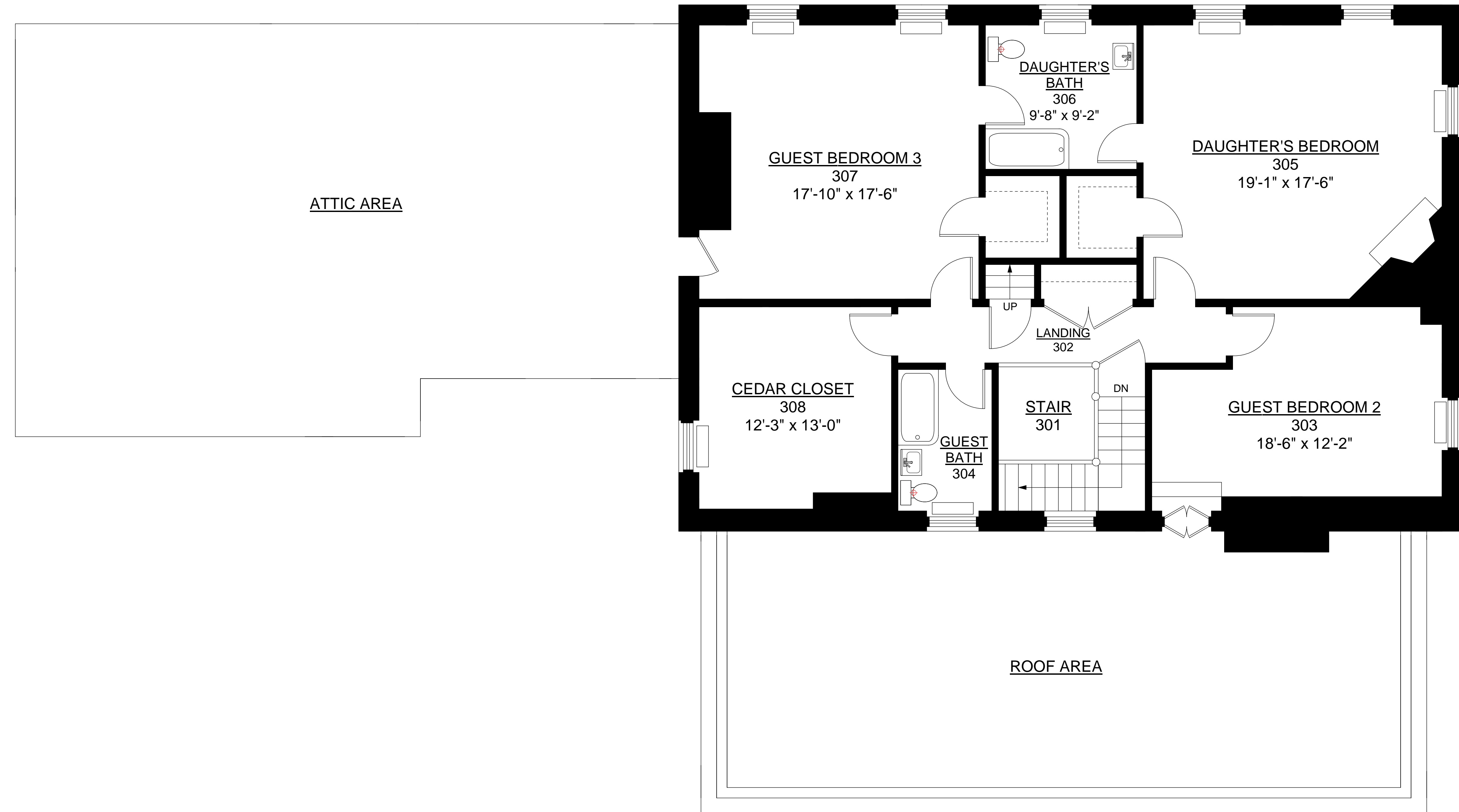


PROJECT:  
 66 Cooke Street  
 Providence, Rhode Island  
 As-Builts

NUMBER:	DRAW:
DATE: January 24, 2009	CHECK:
SCALE: 1/4" = 1'-0"	

DRAWING TITLE:  
 Existing Conditions  
 Second Floor Plan  
 Ceiling Height - 8'-2"  
 Gross Floor Area =  
 3,620 SF

DRAWING NUMBER:  
**A-2**



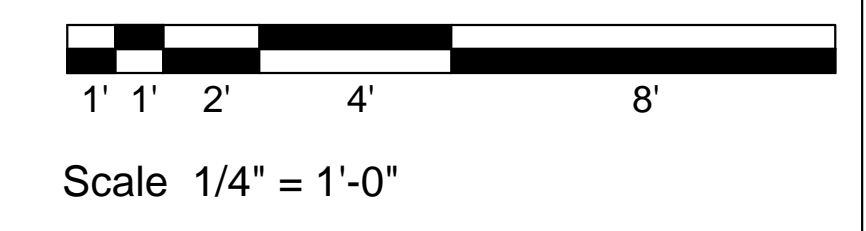
PROJECT:  
 66 Cooke Street  
 Providence, Rhode Island  
 As-Builts

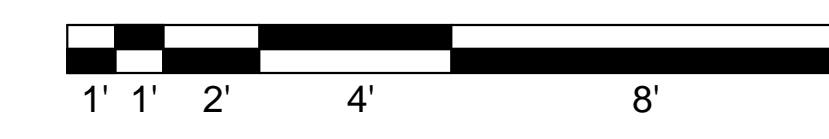
NUMBER:	DRAW:
DATE: January 24, 2009	CHECK:
SCALE: 1/4" = 1'-0"	

DRAWING TITLE:  
 Existing Conditions  
 Second Floor Plan  
 Ceiling Height - 8'-1"  
 Gross Floor Area =  
 1,682 SF

DRAWING NUMBER:

**A-3**





Scale 1/4" = 1'-0"

New England Floor Plans  
 Cumberland, Rhode Island  
 Telephone - 800-328-0217  
 www.nelfloorplans.com

PROJECT:  
  
 66 Cooke Street  
 Providence, Rhode Island  
  
 As-Builts

NUMBER:	DRAW:
DATE: January 24, 2009	CHECK:
SCALE: 1/4" = 1'-0"	

DRAWING TITLE:  
 Existing Conditions  
 Basement Floor Plan  
 Ceiling Height - 7'-8"  
 Gross Floor Area =  
 3,620 SF

DRAWING NUMBER:

**A-4**